

LANDEZINE LIVE



Martí Franch
EMF



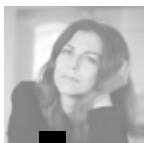
Jenny B. Osuldsen
SNØHETTA



Antje Stokman
STUDIO URBANE
LANDSCHAFTEN



Michiel Van Driessche
FELIXX



Ana Kučan
Studio AKKA



Matej Blenkuš
Studio ABIRO

LANDEZINE LIVE
20.1.2017, 14:00-20:00
STARA MESTNA ELEKTRARNA -
ELEKTRO LJUBLJANA,
SLOMŠKOVA 18

KAZALO / INDEX

Program / Programme	2
O Landezine / About Landezine	4
LILA - Landezine International Landscape Award	6
Felixx	8
EMF - Estudi Martí Franch	12
Razprava: Interdisciplinarni pristop k oblikovanju odprtega prostora / Discussion: Interdisciplinary approach to design of open space	16
Ana Kučan, Studio AKKA / BF, Univerza v Ljubljani Biotechnical Faculty, University of Ljubljana	18
Matej Blenkuš, Studio Abiro / FA, Univerza v Ljubljani, Faculty for Architecture, University of Ljubljana	22
Antje Stokman, Studio Urbane Landschaften / Univerza v Stuttgartu, Stuttgart University	26
Jenny B. Osuldsen, Snøhetta	30

PROGRAM

- 4 **14:00** UVOD: Zaš Brezar, Robert Schäfer
- 14:15** predstavitev biroja nagrajenega z LILA People's Choice Award:
Felixx, predstavlja Michiel Van Driessche
- 14:45** predstavitev glavnega nagrajenca nagrade LILA:
EMF - Martí Franch, predstavlja Martí Franch
- 15:40** ODMOR
- 16:00** Razprava: Interdisciplinarni pristop k oblikovanju odprtega
prostora z Antje Stokman, Jenny B. Osuldsen, Martijem Franchom,
Ano Kučan ter Matejem Blenkušem. Moderira: Robert Schäfer.
- 17:30** ODMOR
- 18:00** Antje Stokman / Studio Urbane Landschaft
- 19:00** Jenny B. Osuldsen / Snøhetta
- 20:00** ZAKLJUČEK

PROGRAMME

- 14:00** INTRODUCTION: Zaš Brezar, Robert Schäfer
- 14:15** LILA People's Choice Award Winner:
Felixx, presentation by Michiel Van Driessche
- 14:45** LILA Winner:
EMF - Martí Franch, presentation by Martí Franch
- 15:40** BREAK
- 16:00** Discussion: Interdisciplinary approach to design of open
space with Antje Stokman, Jenny B. Osuldsen, Marti Franch, Ana
Kučan, Matej Blenkuš, Moderator: Robert Schäfer.
- 17:30** BREAK
- 18:00** Antje Stokman / Studio Urbane Landschaft
- 19:00** Jenny B. Osuldsen / Snøhetta
- 20:00** CONCLUSION

Spletno stran www.landezine.com je ustanovil slovenski krajinski arhitekt Zaš Brezar leta 2009 v Ljubljani, z namenom objavljanja krajinskoarhitekturnih projektov s celega sveta. Danes je Landezine mednarodno prepoznana stran in ena najvidnejših v stroki na svetu. Vsak dan obiše Landezine več kot 5.000 obiskovalcev. V letu 2016 smo razširili obseg delovanja in okrepili prisotnost v mednarodni skupnosti krajinskih arhitektov predvsem z ustanovitvijo sekcije "Landscape Issues", organizacijo nagrade LILA - Landezine International Landscape Award ter dogodka Landezine LIVE. Zasluge za tako obsežno širitev delovanja gredo v veliki meri Robertu Schäferju, ki se je v letu 2016 pridružil našemu kolektivu. Schäfer je študiral krajinsko arhitekturo in novinarstvo. Leta 1992 ustanovil mednarodno strokovno revijo Topos in bil njen dolgoletni odgovorni urednik. Več kot 30 let je urejal tudi nemško revijo Garten+Landschaft.

Landezine was founded by Slovenian landscape architect Zaš Brezar in 2009 in Ljubljana with a purpose to showcase landscape architecture projects from around the globe. Today, Landezine is internationally renowned landscape architecture website and one of the most visible online media in the profession. More than 5,000 visitors from all over the world visit landezine.com every day. In 2016, we expanded our activities and empowered our voice in the global community by opening "Landscape Issues", organization of award LILA - Landezine International Landscape Award and starting the Landezine LIVE event. This development and expansion of our activities wouldn't have been possible without the invaluable support by Robert Schäfer who joined our team in 2016. Robert studied Landscape Architecture and Journalism, founded Topos in 1992 and was in charge of Garten+Landschaft since 1984.



UPDATED: Play Landscape
by MINE, Berlingen (BE) by
Carve and OMGEVING

1 year ago
2016 | Links only | Parks | Playgrounds
Post-Industrial | Selected Projects | The
Netherlands | Video

_landscape issues

views
news
reviews



Martin Rein-Cano. "It's about canalising energies you find in places."
Zaš Brezar

Martin Rein-Cano is founder of a Berlin based landscape architecture practice Toposk. Their Superkilen project was recently awarded with Aga Khan Award.



Urban ClimApp for Amsterdam
Sandra Lenzenhölzer



Rosa Barba International Landscape Prize 2016
Zaš Brezar



Janus Face of LA's Public Space
Kelly Shannon Victor
J. Jones
LAF: Colourful Summit
Robert Schäfer

_projects

parks squares & plazas
playgrounds bridges & stairs
cemeteries & memorials
post-industrial riverbanks
waterfronts campus corporate
roofs cultural heritage stormwater
heritage residential
landscape architects streets
restorations water features skate

Click Home and
Follow @landezine on Twitter

- LANDSCAPE PROLOGUES
- OFFICES
- COUNTRIES
- CITIES
- MONTH OF PUBLICATION
- YEAR OF CONSTRUCTION

_city guides

- sydney (34)
- barcelona (26)
- copenhagen (25)
- berlin (21)
- norway tourist routes (21)
- london (20)
- melbourne (20)
- berlin (19)
- amsterdam (18)
- zurich (16)
- new york city (15)
- lyon (15)



Széll Kálmán square, Budapest, Hungary
2016, Budapest, Hungary - squares and plazas



Mont St Michel Maritime Restoration by HVL
2016, France - parking, parks, squares and plazas



Bosphorous Landing Park - 3rd Bridge Competition, Istanbul, Turkey by Perkins+Will
2014, competitions, turkey



OFFICE PROFILE: Felix
landscape architects, the netherlands



Waitangi Park by Wraight Athfield Landscape + Architecture
2006, new zealand - parks, waterfronts, wairangi



Lion Mountain Park, Suzhou by TLS
bridges and plans, china, competitions, parks, suzhou, video, water features

LILA - LANDEZINE INTERNATIONAL LANDSCAPE AWARD

9

LILA, mednarodna krajinskoarhitekturna nagrada, je namenjena birojem in posameznikom, ki se ukvarjajo z urejanjem odprtega prostora. Slavi progresivne krajinskoarhitekturne prakse, ki razvijajo kreativne in inovativne rešitve za probleme odprtega prostora. Išče drzne in eksperimentalne biroje z vsega sveta, ki lahko ponudijo primerne odgovore na kompleksna vprašanja, ki se tičejo načrtovanja odprtega prostora. LILA je bila prvič organizirana v letu 2016. Zaradi globalne priljubljenosti strani landezine.com je takoj pritegnila mednarodno pozornost. Prijavili so se biroji z vseh celin. Trenutno je LILA edina mednarodna nagrada na svetu, ki ne nagraduje posameznih projektov, temveč krajinskoarhitekturne kolektive in posameznike za njihov pristop k oblikovanju odprtega prostora.

www.landezine-award.com

LILA aims to honour a progressive landscape architecture practice that both significantly contributes to exploring contemporary landscape issues and offers creative solutions to challenges that our profession is facing. LILA is seeking daring, experimental office that pursue an excellent design approach and is able to offer appropriate and innovative answers to complex questions.

LILA was organized for the first time in 2016 and due to the popularity of landezine.com immediately drew international attention. Landscape architecture offices from all continents registered. LILA is now the only international award for landscape architecture offices to award their approach to design of open spaces and not single projects.

LILA žirija
LILA jury



Robert Schäfer, Nemčija / Germany
Predsednik žirije / President of the Jury



Chris Reed, ZDA / USA
Profesor na univerzi Harvard GSD in ustanovitelj biroja Stoss / Professor at Harvard GSD and founder of Stoss



Adrian McGregor, Avstralija / Australia
Ustanovitelj avstralskega biroja McGregor+Coxall (Sydney, Melbourne, Bristol in Shanghai). / Founder of McGregor+Coxall (Sydney, Melbourne, Bristol and Shanghai)



Dr. Xiaodi Zheng, Kitajska / China
Predava na univerzi Tsingua v Pekingu. Diplomirala na Harvardu / Lecturer at Tsingua, Beijing, Graduated at Harvard GSD



Peter Zöch, Avstrija / Austria
Publicist in krajinski arhitekt / Writer and landscape architect

9

FELIXX

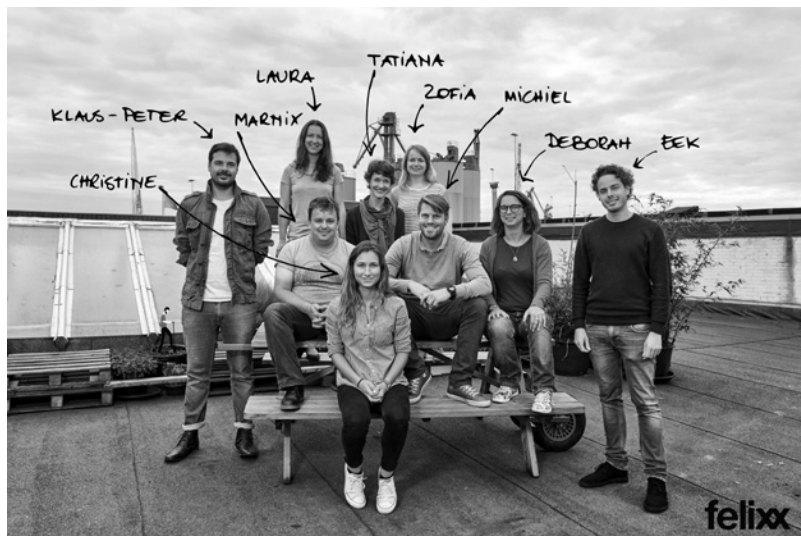
LILA nagrada obiskovalcev strani
Landezine 2016 /
LILA People's Choice Award 2016

Rotterdam, Nizozemska /
Rotterdam, Netherlands

felixx.nl



10



Felixx je prejel največ glasov na spletni strani landezine-award.com, kjer so obiskovalci strani lahko glasovali za 76 birojev iz vsega sveta.

Felixx received the highest number of votes on landezine-award.com where visitors of Landezine were able to vote for 76 offices from around the world.

Felixx je mlad nizozemski, proaktivni krajinskoarhitekturni biro. Ustanovili so ga Michiel Van Driessche, Deborah Lambert in Marnix Vink. Ukvarja se z oblikovanjem javnega prostora, urbanim planiranjem, strateškimi krajinskimi transformacijami in je vključen v prostorske raziskave.

Felixx o sebi pravi: "Menimo, da je lahko krajinska arhitektura učinkovito orodje za premagovanje okoljskih in družbenih izzivov, ki jih prinaša čas. Boljše življensko okolje potrebuje boljšo prostorsko organizacijo, zato krajinsko arhitekturo raziskujemo kot pragmatično in obenem utopično prakso. Krajine urejamo kot pametne prostorske sisteme in hkrati kot udobna in prijetna življenjska okolja. Na stičišču pragmatizma in idealizma poskušamo realizirati 'srečna okolja'."

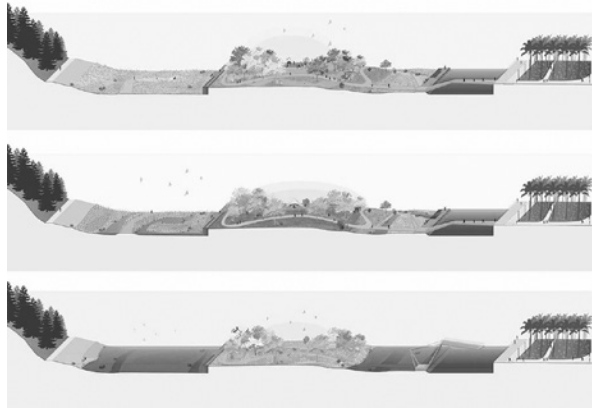
Felixx is a young office for proactive landscape architecture, founded by Michiel Van Driessche, Deborah Lambert and Marnix Vink. The office designs public spaces, works on urban development plans, engineers landscape transformation strategies, and is involved in spatial research projects.

"We believe landscape architecture can be instrumental in dealing with the environmental and societal challenges we are facing. A better world requires a better spatial organization of our living environment. Therefore Felixx explores landscape architecture as a pragmatic utopian practice. Engineering landscapes as smart spatial systems, while envisioning them as the paradisiacal environments to live in. By hitting this promising overlap between pragmatism and idealism, we want to improve the world we are living in and realize happy environments."

LANDEZINE LIVE

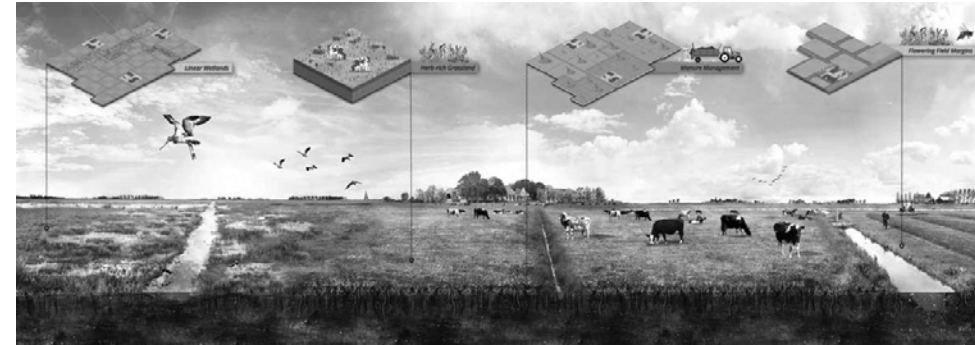
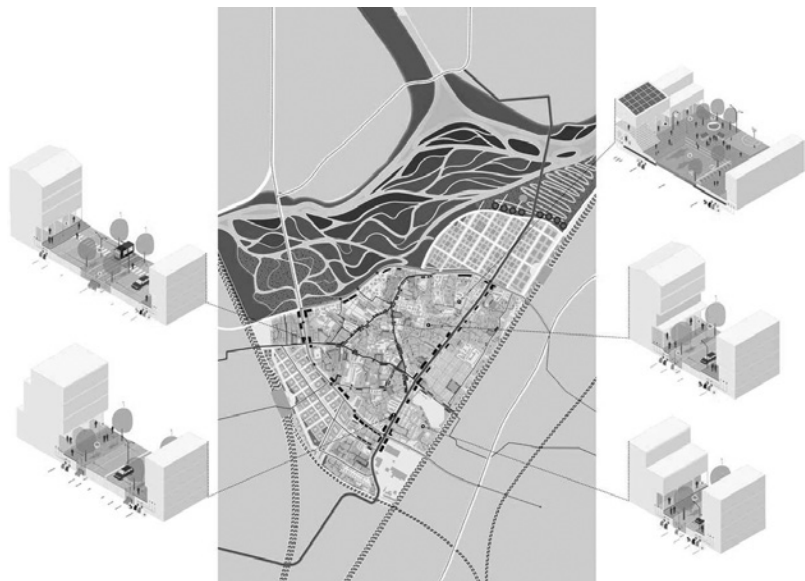
20.1.2017 LJUBLJANA

11



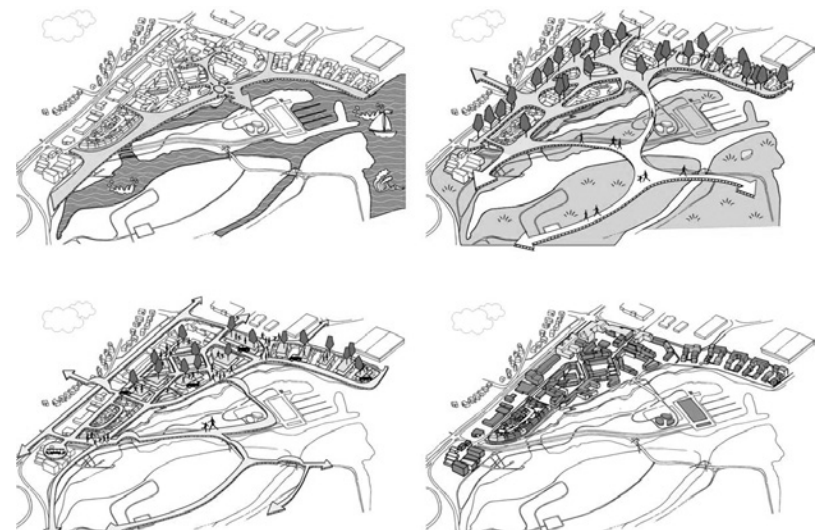
Sezonski otoki,
Berat, Albanija,
2015 / Seasonal
isles, Berat,
Albania, 2015

Prenova revne četrti Dharavi preko izboljšav ulic in cest,
Mumbaj, Indija, 2014 / Reinventing Dharavi trough street-led
slum upgrading, Mumbai, India, 2014



Ukrepi za biotsko pestrost na pašnikih, Friesland, Nizozemska,
2015 / Towards biodiversity-based dairy farming, Friesland,
Netherlands, 2015

Vogabyggð, Reykjavik, Islandija, 2014 /
Vogabyggð, Reykjavik, Iceland, 2014



EMF - ESTUDI MARTÍ FRANCH

LILA nagrada strokovne žirije 2016 /
LILA - Landezine International Land-
scape Award 2016

Girona, Španija /
Girona, Spain

emf.cat



EMF izkazuje izjemno znanstveno in tehnično delo, predvsem pa dobro uresničuje paradigmo, da je doživljanje krajine kulturna izkušnja. V času, ko se ekosistemi srečujejo s posledicami človekovih ravnanj, sta ohranjanje in obnavljanje narave vitalnega pomena za ohranitev živalskih vrst. Martí Franch se zaveda, da majhne spremembe, ki poudarijo naravne procese in elemente take, kot so sami po sebi v naravi, igrajo pomembno vlogo v vzpostavljanju vezi med uporabnikom in krajino - človekom in njegovim okoljem.

- žirija LILA 2016

EMF is practicing excellent scientific and technical work, but most importantly also proves that visiting landscapes must mean a culturally fulfilling experience. In the times, when ecosystems are constantly being challenged by the consequences of human activities, preservation and restoration of nature are vital for the wellbeing of all species. Martí Franch is aware that promoting subtle change in order to emphasise overwhelming natural forces and features left 'as they are' plays a very important role in establishing a bond between the user and the landscape - people and environment.

- LILA 2016 Jury

Martí Franch Batllori je krajinski arhitekt z diplomom Univerze v Greenwichu in diplomom iz hortikulture iz Barcelonske fakultete ETSAB. Po dodatnih izobraževanjih v Amsterdamu, Londonu in Berlinu je leta 1999 ustanovil interdisciplinarni biro EMF, ki združuje strokovnjake s področja oblikovanja urbanih krajin in okoljskega upravljanja, deluje pa v več evropskih državah. V svojih projektih se osredotoča na združevanje ekoloških in kulturnih sestavin okolja. Od leta 2001 predava na Fakulteti za arhitekturo v Barceloni (ETSAB), kot gostujoči profesor pa tudi na ENSPV v Versaju v Franciji, na RMIT v Melbournu v Avstraliji ter na LU v Lundu na Švedskem. Kot predstavnik ETSAB Barcelona je pripomogel k ustanovitvi EMiLE, evropskega magistrskega programa krajinske arhitekture, ki povezuje več fakultet: ENSPV Versaj, AvB Amsterdam, LUH Hannover, UE Edinburgh and ETSAB. Njegova dela so objavljena v vseh pomembnejših mednarodnih publikacijah s področja krajinske arhitekture. Leta 2012 je prejel najpomembnejšo mednarodno strokovno nagrado, nagrado Rosa Barba ter tudi častno nagrado Združenja ameriških krajinskih arhitektov, ter veliko drugih nominacij. Trenutno Franch opravlja doktorski študij na evropski podružnici avstralskega RMIT (Melbourne) in je štipendist programa ADAPT'r na GSA za 18 mesecev.

Landscape Architect by the University of Greenwich and Horticulturalist by ETSAB in Barcelona, is the founder & principal of 'EMF landscape architecture'. EMF is an interdisciplinary practice of independent experts in the field of urban and environmental design, exercising internationally. 'EMF' was settled in 1999 after professional and academic training in Amsterdam, London and Berlin. Ever since, Franch explores hybrid ways between ecological systems & cultural constructs to inform projects and build up new realities. Since 2001 Franch teaches in ETSAB Barcelona, and has been visiting teacher at ENSPV Versailles, RMIT Melbourne or LU Lund. Representing ETSAB Barcelona, Franch contributed to the conception of EMiLA, the European Master in Landscape Architecture a joint Master Degree between ENSPV Versailles, AvB Amsterdam, LUH Hannover, UE Edinburgh and ETSAB. His work has been internationally published and awarded with an ASLA American Society of Landscape Architects Honor Award 2012, European Landscape Biennial - Rosa Barba Prize 2012, as well as selected finalist in FAD 2012, Rosa Barba Prize 2010, CCCB European Prize of Public Space 2012 among others. Currently Franch is doing a Design Practice Research PhD by RMIT Melbourne (Europe) and is an ADAPT'r fellow at GSA for a period of 18 months.



Tudela-Culip (Club Med) prenova območja rta 'Cap de Creus', Katalonija, 2010 / Tudela-Culip (Club Med) restoration project in 'Cap de Creus' Cape, Catalonia, 2010

'les echasses' golf & surf nature resort, Landes, France / 'les echasses' golf & naravni deskarski park, Landes, Francija



Muzej Can Framis, Barcelona, Španija, 2010 / Can Framis Museum, Barcelona, Spain, 2010

'La Tancada' Soline, Llacuna de la Tancada, delta reke Ebro, 2011 / 'La Tancada' Salt Fields, Llacuna de la Tancada, Delta de l'Ebre, 2011



RAZPRAVA: INTERDISCIPLINARNI PRISTOP K OBLIKOVANJU ODPRTEGA PROSTORA

Ob koncu 19. stoletja se je izkazalo, da uveljavljeni poklici, kot so arhitekt, inženir in vrtnar, niso več kos družbenim in okoljskim izzivom intenzivne urbanizacije. Nove okoliščine so zahtevale novo disciplino, povezano s krajino. Izraz krajinski arhitekt je prvič uporabil Olmsted v Združenih državah Amerike leta 1860, a z novim poimenovanjem ni bil povsem zadovoljen. Prepričan je bil, da se bo z rabo besede arhitekt v poimenovanju nove discipline v očeh javnosti okrepila njena podoba, hkrati pa se bo izognila prepričanju, da je povezana zgolj z rastlinami in vrtovi. Obenem, je še utemljeval Olmsted, bo ta besedna zveza tudi varovala pred nadaljnjim „razhajanjem“ med arhitekturo in krajino.

Olmsted je bil prepričan, da bo razpon novega študija, ki bo črpal iz sodobnih znanstvenih dognanj, pomagal novemu poklicu, da se utemelji na specializiranih vidikih tehničnih znanj in se s tem ustrezno odmakne tako od lepih umetnosti kot od arhitekture.

(Charles Waldheim: Thinking landscape as urbanism, in: Thinking the contemporary landscape; Princeton Architectural Press, 2016)

Krajinska arhitektura je tako 150 let stara zgodba o uspehu. V nekaterih krajih bolj, v drugih manj. Povsod pa je nujno sodelovanje med krajinskimi arhitekti, arhitekti ter različnimi profili inženirjev in znanstvenikov. Naraščajoči izzivi urbanizacije, klimatskih sprememb, poglobljanja družbene neenakosti in digitalne revolucije zahtevajo sodelovanje vseh planerskih disciplin pri oblikovanju odprtega prostora.

Landezine LIVE odpira vprašanje interdisciplinarnega sodelovanja pri oblikovanju odprtega prostora in vabi strokovnjake k izmenjavi izkušenj in mnenj. Na okrogli mizi sodelujejo Ana Kučan (AKKA, Biotehniška fakulteta), Matej Blenkuš (Abiro, Fakulteta za arhitekturo), Jenny B. Osuldsen (Snøhetta, University of Life Sciences), Antje Stokman (Studio Urbane Landschaften, Institute of Landscape Planning and Ecology) ter Martí Franch Batllori (EMF, ETSAB Barcelona). Razpravo moderira Robert Schäfer.

DISCUSSION: INTERDISCIPLINARY APPROACH TO DESIGN OF OPEN SPACE

By the end of the nineteenth century the available professional identities such as architect, engineer, gardener were perceived by many to be inadequate to social and environmental challenges of rapid urbanization. These new conditions demanded a new professional identity explicitly associated with landscape. In the US, Olmsted used the term landscape architect first in 1860, but he remained bothered with the new term. Olmsted was convinced, that adopting the mantle of the architect would bolster the new field in the eyes of the public, and mitigate against the tendency to mistake the work as being primarily concerned with plants and gardens. It would also, Olmsted argued, guard against the greater danger of landscape's potential future „disalliance“ with architecture. Olmsted became convinced that the range of study that was called for by increasing demands of scientific knowledge would press the new profession toward increasing reliance on specialised bodies of technical knowledge, and a resulting alienation from the fine arts and architecture.

(Charles Waldheim: Thinking landscape as urbanism, in: Thinking the contemporary landscape; Princeton Architectural Press, 2016)

Now landscape architecture as a profession and discipline is a 150 year old success story. In some places. In others not. But everywhere there is a need to cooperate with engineers, architects, scientists. Increasing challenges with urbanisation and climate change, social disparities and digital revolution forces all planning parties to work together.

Landezine LIVE explores the question of interdisciplinary collaboration considering the design of open space and invites experts to exchange experiences and views. Participants on the round table are Ana Kučan (AKKA, Biotechnical Faculty), Matej Blenkuš (Abiro, Faculty of architecture), Jenny B. Osuldsen (Snøhetta, University of Life Sciences), Antje Stokman (Studio Urbane Landschaften, Institute of Landscape Planning and Ecology) and Martí Franch Batllori (EMF, ETSAB Barcelona). Round table is moderated by Robert Schäfer.

ANA KUČAN

Ljubljana, Slovenija /
Ljubljana, Slovenia

akka.si



Prof. dr. Ana Kučan je krajinska arhitektka, redna profesorica na Oddelku za krajinsko arhitekturo BF UL, z Luko Javornikom ustanoviteljica Studia AKKA. Diplomirala in doktorirala je v Ljubljani, magistrirala pa na GSD univerze Harvard v ZDA. Predava na domačih in tujih univerzah. Sama in s sodelavci iz Studia AKKA je zmagala na pomembnih natečajih, razstavljala doma in v tujini in za svoje delo prejela več nagrad, med njimi nagrado Piranesi (1998 in 2002) in Plečnikovo nagrado (2003). Leta 2006 je bila izbrana med finaliste za evropsko nagrado Rosa Barba v Barceloni. Je članica DKAS in dejavna v mreži evropskih šol za krajinsko arhitekturo. Urednikuje in piše za časopis, bila je članica prvega uredniškega odbora akademske revije Journal of Landscape Architecture, je avtorica knjige Krajina kot nacionalni simbol in vodilna avtorica Vsi odtenki zelene/All Shades of Green, projekta za Slovenski paviljon na 12. arhitekturnem bienalu v Benetkah. Predava na več univerzah po Evropi, pred kratkim pa je svoje delo predstavila tudi na AIA v New Yorku in na kongresu IFLA v St. Petersburgu, 2015 pa ji je bil podeljen tudi častni naslov katedre Adalberto Libera.

Dr. Ana Kučan is a professor of landscape design and theory at the Department of Landscape Architecture of the Biotechnical Faculty, University of Ljubljana, Slovenia, and a principal of Studio AKKA. After graduating in landscape architecture at the University of Ljubljana, she continued her studies in urban design at the Graduate School of Design, Harvard University, and then returned to Ljubljana to complete her doctoral dissertation. She has won prominent urban and landscape design competitions, both individually and with Studio AKKA. Her work has received several national and international awards, among them a nomination for the Rosa Barba award in 2006. She published Landscape as a National Symbol in 1998, a work based on her doctoral thesis. Ana Kučan was a member of the first Editorial Advisory Board of the academic Journal of Landscape Architecture and writes for Landscape Architecture Europe. She's been invited to lecture at several universities in Europe, presented her work at the AIA in New York and at the IFLA Congress in St. Petersburg and holds the Libera Chair of Excellency. She is also the leading team member of the project All Shades of Green, presented at the 12th Biennale of Architecture in Venice in 2010.



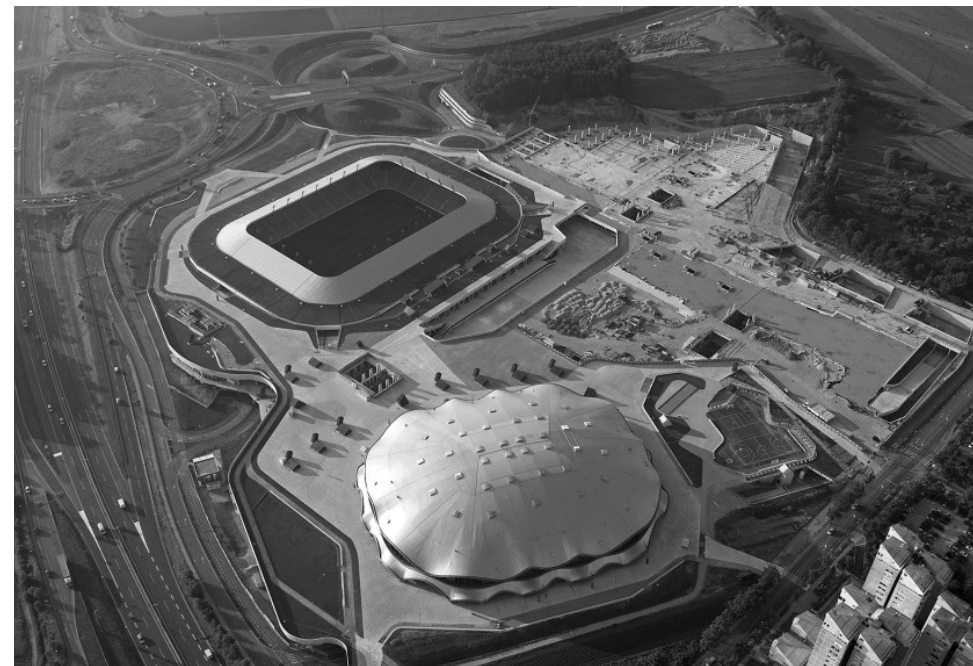
Nordijski center Planica, Rateče, Slovenija, 2015 /
Nordic Ski Centre Planica, Rateče, Slovenia, 2015



Osnovna šola Ob Rinži, Kočevje, Slovenija, 2004 /
Ob Rinži Elementary School, Kočevje Slovenia, 2004

Športni park Stožice, Ljubljana Slovenija, 2010 /
Sport Park Stožice, Ljubljana Slovenia, 2010

Vrtec Ledina, Ljubljana, Slovenija, 2009 /
Ledina Kindergarten, Ljubljana, Slovenia, 2009



MATEJ BLENKUŠ

Ljubljana, Slovenija /
Ljubljana, Slovenia

abiro.net



Matej Blenkuš je izredni profesor na Fakulteti za arhitekturo, Univerza v Ljubljani, kjer poučuje premeta Konstrukcije in Projektiranje. Od leta 2015 je prodekan za študijske in finančne zadeve in član komisije za doktorski študij. Obenem vodi sedemčlanski arhitekturni studio abiro v Ljubljani. Je član Društva arhitektov Ljubljane in Zbornice za arhitekturo in prostore Slovenije. Diplomiral in doktoriral je na Fakulteti za arhitekturo, UL, magistriral pa na Helsinški tehniški univerzi, danes Aalto University. Za svojo magistrsko nalogo je prejel nagrado za najboljšo študijsko delo leta 1999. Sodeloval je na številnih nacionalnih arhitekturnih natečajih, odprtih in vabljenih, za kar je skupaj s soavtorji prejel več nagrad in priznanj. Ima več kot 15 letne izkušnje iz projektiranja. Prejel je Plečnikovo nagrado za Nordijski center Planica (2016), Plečnikovo priznanje za Mestno knjižnico Grosuplje (2007), Študentsko Plečnikovo nagrado (1996) in Zupančičevo nagrado mesta Ljubljane za Večnamensko stavbo Šmartinka (2002). Za obsežen arhitekturni opus je skupaj s prof. Milošem Florijančičem leta 2015 prejel najvišjo stanovsko nagrado Platinasti svinčnik. Z drugimi deli je bil večkrat v nacionalni selekciji za evropsko nagrado Mies van der Rohe. Njegova dela so objavljena v številnih domačih in mednarodnih publikacijah. Predaval je na zagrebških Dnevih Ori-

Matej Blenkuš is an associated professor at the Faculty for Architecture, University of Ljubljana where he teaches subject Structures and Design Studio. In 2015 he was appointed as a vice dean for study and financial affairs. He is also a member of the doctoral studies committee. He heads a architectural design office abiro and is a member of Architectural association of Ljubljana and a Chamber for architecture and spatial planning of Slovenia.

He graduated and received his PhD at the Faculty of Architecture, University of Ljubljana. His Master Thesis, submitted at the Helsinki University of Technology (today Aalto University) was awarded as a master thesis of the year 1999. He took part in many national opened and invited design competitions where together with coauthors he won many awards and honorable mentions. He has more than 15 years of experience in architectural design. Nordic center Planica was awarded with Plečnik's Prize in 2016, Municipal library Grosuplje with Plečnik's Recognition in 2007 and Multipurpose building Šmartinka with Zupančič's prize of city of Ljubljana in 2002. Together with prof. Miloš Florijančič he was awarded with the Platinum Pencil award by the Chamber for architecture and spatial planning. Some of his other works were many times among the national selection

sa, Piranskih dnevih arhitekture in na več fakultetah in simpozijih v Gradcu, Zagrebu, Splitu in Frankfurtu. Dela abiroja so bila leta 2002 in 2008 razstavljena na samostojnih razstavah v Cankarjevem domu v Ljubljani, leta 2015 pa strnjena v monografijo, ki je izšla pri založbi Muzeja za arhitekturo in oblikovanje Slovenije.

for the European award Mies van der Rohe. His work are published in many domestic and international magazines. He gave lectures on the Days of Oris in Zagreb and the Piran Days of Architecture, but also at the faculties and conferences in Graz, Zagreb, Split and Frankfurt. The works of abiro were exhibited in 2002 and 2008 in the Cankarjev dom in Ljubljana and published in a monograph in 2015 by the Museum of architecture and design Slovenia.

Nordijski center Planica, Rateče, Slovenija, 2015 /
Nordic Ski Centre Planica, Rateče, Slovenia, 2015



Garažna hiša Šempeter, Ljubljana, Slovenija, 2005 /
Garage Building Šempeter, Ljubljana, Slovenia, 2005

Knjižnica Grosuplje, Grosuplje, Slovenija, 2007 /
Public Library in Grosuplje, Grosuplje, Slovenia, 2007



ANTJE STOKMAN

Stuttgart, Nemčija /
Stuttgart, Germany

urbanelandschaften.de



Antje Stokman je nemška krajinska arhitektka in profesorica krajinskega planiranja in ekologije. Po diplomi leta 2000 je sodelovala pri številnih mednarodnih projektih v okviru biroja Rainer Schmidt Landschaftsarchitekten. Od leta 2004 je članica Zbornice nemških arhitektov od 2004, od leta 2005 do 2010 je bila izredna profesorica Oblikovanja ekosistemov in Upravljanja z vodami na Univerzi v Hanovru ter članica interdisciplinarne platforme namenjene teoriji in praksi oblikovanja urbanih krajin "Studio Urbane Landschaften".

Od leta 2010 je direktorica Inštituta za Krajinsko planiranje in ekologijo na Univerzi v Stuttgartu in soustanoviteljica mednarodnega magistrskega programa "Integrirani urbanizem in vzdržno oblikovanje". Pri svojem delu se osredotoča na strategije razvoja infrastrukturnih in ekoloških sistemov kot osnova za trajnostno oblikovanje urbanih krajin. Za svoje delo je prejela več nagrad, med njimi leta 2009 Lower Saxony Science in leta 2011 nagrado krajinskoarhitekturne revije Topos. Med leti 2010 in 2014 je bila članica nemškega nacionalnega sveta za prostorsko planiranje in od 2012 članica Sveta zvezne dežele Baden-Württemberg za Vzdržni Razvoj.

Antje Stokman is a landscape architect and professor of landscape planning and ecology. After graduation in 2000, she worked on several international projects with Rainer Schmidt Landschaftsarchitekten and has been a member of the German Chamber of Architects since 2004. In 2005, she became an Associate Professor of Ecosystem Design and Watershed Management at Hanover University as well as member of the STUDIO URBANE LANDSCHAFTEN, an interdisciplinary research, practice and teaching platform on the topic of urban landscapes. Since 2010, she is director of the Institute of Landscape Planning and Ecology at Stuttgart University and co-founder of the international Masters Programme "Integrated Urbanism and sustainable Design". Her work focusses on strategies to develop infrastructural and ecological systems as a basis for sustainable urban form and design of urban landscapes. She was awarded the Topos Landscape Award in 2011 and the Lower Saxony Science Prize in 2009. She has been serving as a member of the German national advisory council on spatial planning from 2010-2014 and the sustainability council of the province Baden-Württemberg since 2012.



Poletna šola Lima onkraj parka: Oblikovanje urbanih krajin z vodo, Lima, Peru, 2003 / Summerschool Lima Beyond the Park: Designing Urban Landscapes for a City Out of Water, Lima, Peru 2013

Konstruirana vodna krajina znotraj otroškega igrišča, Lima, Peru, 2013 / Constructed Wetland within „Children’s Park“, Lima, Peru 2013



Eksperiment „Casa Schützenplatz“, Resničnostni Laboratorij za vzdržno kulturo mobilnosti, Stuttgart, 2016 / Real-Life Experiment „Casa Schützenplatz“, Realworld Laboratory for Sustainable Mobility Culture, Stuttgart, 2016

Raziskovalno vozilo, Resničnosti laboratorij za vzdržno kulturo mobilnosti, Stuttgart, Nemčija, 2016 / Research Vehicle, Realworld Laboratory for Sustainable Mobility Culture, Stuttgart, Germany, 2016



JENNY B. OSULDSSEN

Oslo, Norveška /
Oslo, Norway

snohetta.com



Biro Snøhetta je bil ustanovljen kot arhitekturno / krajinskoarhitekturni studio in je ostal zvest transdisciplinarnemu načinu razmišljanja vse do danes. Prerasel je v mednarodno priznan kolektiv arhitektov, krajinskih arhitektov, notranjih in grafičnih oblikovalcev. Glavna studia se nahajata v Oslu in New Yorku, sicer pa šteje več kot 180 zaposlenih 30 različnih narodnosti, ki delujejo v 7 mestih, v 6 državah. Prav sodelovanje med različnimi disciplinami je rdeča nit celotnega portfolia Snøhetta. Celotno njihovo delovanje odraža prepričanje, da morata biti krajina in arhitektura del skupnega razmisleka že v najzgodnejših fazah projekta.

Jenny B. Osuldsen je magistrirala iz krajinske arhitekture na Norwegian University of Life Sciences leta 1991 in študirala krajinsko arhitekturo in umetnost na Cal Poly University Pomona v Los Angelesu (ZDA). Biroju Snøhetta se je pridružila leta 1995 in je ena od šestih partnerjev v podjetju. Predava krajinsko arhitekturo na Norwegian University of Life Sciences v kraju Ås in je še AxJohnson gostujoča profesorica na SUDes magistrskem programu trajnostnega oblikovanja urbanih krajin na Univerzi v Lundu na Švedskem.

Snøhetta began as a collaborative architectural and landscape workshop, and has remained true to its trans-disciplinary way of thinking since its inception. Today, Snøhetta has grown to become an internationally renowned practice of architecture, landscape architecture, interior architecture and brand design. Comprised of two main studios, in Oslo, Norway and New York, USA, the practice currently has more than 180 employees from 30 different nations operating in 7 cities in 6 countries. A definite relationship between multiple disciplines is a driving force in all of Snøhetta's work. This is demonstrated over the company's long history that the disciplines of landscape and architecture should be worked together without division from the earliest stages of designs.

Jenny B. Osuldsen, graduated with a Master's degree in Landscape Architecture from the Norwegian University of Life Sciences in 1991 and has also studied landscape architecture and art at Cal Poly University Pomona, Los Angeles, USA. She has been working in Snøhetta since 1995 and is one of six partners in Snøhetta. She is a Professor and teaching landscape architecture at the Norwegian university of Life Sciences at Ås, and is also a AxJohnson Guest Professor at SUDes Masters Program in Sustainable Urban Design at the Lund University in Sweden.



Krajska ureditev ob laboratoriju MAX IV, Lund, Švedska, 2016 /
MAX IV Laboratory Landscape, Lund, Švedska, 2016



Tverrfjellhytta, razgledni paviljon za opazovanje divjih severnih jelenov, Hjerking, Dovre, Norveška, 2011 /
Tverrfjellhytta, Norwegian Wild Reindeer Pavilion, Hjerking, Dovre, Norway, 2011

Rekonstrukcija trga Times, New York, ZDA, 2016 /
Times Square Reconstruction, New York, USA, 2016



Norveška nacionalna opera in balet, Oslo, Norveška, 2008 /
Norwegian National Opera and Ballet, Oslo, Norway, 2008



Člani kolektiva Landezine smo hvaležni vsem, ki so pripomogli k organizaciji in izvedbi dogodka Landezine LIVE. Posebna zahvala gre ambasadorju kraljevine Španije v Sloveniji, gospodu Joséju Luisu de la Peñi Veli.

Landezine LIVE organizira LANDEZINE Društvo za promocijo krajinske arhitekture, Krakovski nasip 26, 1000 Ljubljana, Slovenija.

Idejna zasnova Landezine LIVE
Robert Schäfer, Zaš Brezar

Kordinacija
Zaš Brezar, Polona Calderera

Izdelava LILA trofeje
Ignacio Lopez

Tisk
Birografika Bori

Members of Landezine are thankful to everyone who participated in making Landezine LIVE. Special thanks go to the ambassador of Spain in Slovenia Mr. José Luis de la Peña Vela.

Landezine LIVE is organized by LANDEZINE Society for promotion of Landscape Architecture, Krakovski nasip 26, 1000 Ljubljana, Slovenia.

Landezine LIVE Concept
Robert Schäfer, Zaš Brezar

Coordination
Zaš Brezar, Polona Calderera

LILA Trophy
Ignacio Lopez

Print
Birografika Bori

Organizator / Organiser

Pokrovitelj / Sponsor

Podporniki / Supporters

LANDEZINE | LANDSCAPE
ARCHITECTURE
WORKS



EMBAJADA
DE ESPAÑA
EN ESLOVENIA



DRUŠTVO KRAJINSKIH ARHITEKTOV SLOVENIJE



MUZEJ ZA ARHITEKTURO
IN OBLIKOVANJE
MUSEUM OF
ARCHITECTURE AND DESIGN

Future
Architecture

Univerza v Ljubljani
Biotehniška fakulteta
Oddelek za krajinsko arhitekturo



LANDEZINE Društvo za promocijo
krajinske arhitekture,
Krakovski nasip 26,
1000 Ljubljana,
Slovenija

+386 (0) 40 81 40 04
info@landezine.com
www.landezine.com
www.landezine.com/live

Ljubljana, 2017

landezine.com

